

Road Tunnel

Uetlibergtunnel

Zurich, Switzerland

Gjuch Soft Ground Section

Object

National highway tunnel, new construction

Construction Costs

Total costs Uetliberg tunnel: CHF 1'120 million

Project Schedule

Planning: since 1981

Construction duration: February 2002- March 2003

Project Description

2-tube tunnel: each tube with 2 traffic lanes and one shoulder.

Length Gjuch SGS: approx. 210 m

Diameter: 12.70-14.70 m

Cross section: approx. 148 m²

Slope: 1.6 % (downward)

Driving Method

Driven downward by core boring with steel installation. Some large-scale support measures will be necessary.

Geology

Highly heterogeneous end moraine. Consisting of loamy, sandy gravel. The water table rises from the centre of the tunnel profile at the start to the tunnel roof in an easterly direction.

Construction Details

- The excavation support consists of steel segments and 25 cm steel-fibre reinforced shotcrete layers
- Waterproofing with plastic membrane
- Cast concrete final lining

Our Services

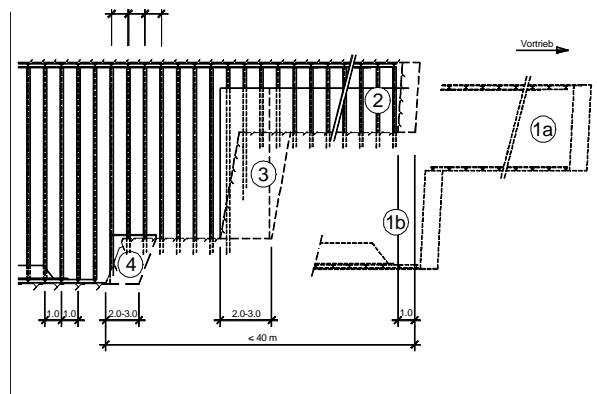
- Complete detail and construction design, tender documents of the underground works
- Partial design of the cut-and-cover sections
- On-site construction management for underground construction
- Support project management of client

Client

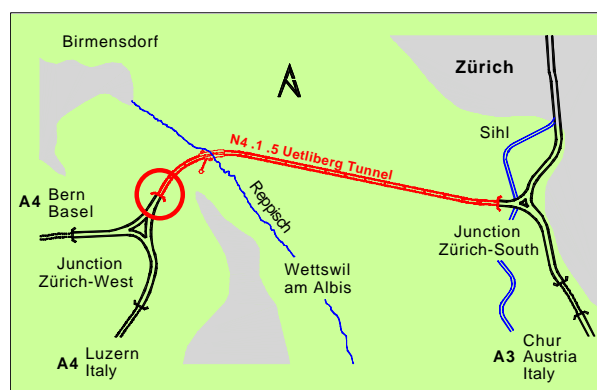
Tiefbauamt des Kantons Zürich, Mr. O. Schnell



Core boring with steel installation



Longitudinal section of the core boring



Site plan

For further information:

www.uetlibergtunnel.ch

Amberg Engineering AG
Trockenloostrasse 21
CH-8105 Regensdorf
Telefon +41 1 870 91 11
Telefax +41 1 870 06 20
info@amberg.ch
www.amberg.ch

Niederlassungen in:
Sargans
Chur
Brünn, CS
Singapur, SG
Madrid, ES

